

NEW FRONTIERS
Our Promise. Our Future.



2014

To the ASL community,

At ASL, our mission—*Our Promise*—is to develop the intellect and character of each student by providing an outstanding American education with a global perspective.

Based on the School's 2010 Strategic Plan and in consultation with the ASL community, the Board of Trustees voted in March 2013 to undertake an effort that will transform our educational program. Upon a foundation of strength, we are building *Our Future*.

The twin goals of the capital campaign for ASL, **New Frontiers: Our Promise. Our Future**, are to grow our endowment and build state-of-the art facilities to ensure all students receive an outstanding education.

Growing our endowment for student financial assistance will help us achieve greater diversity, which is a component of educational excellence. Students learn and grow from people with differing views of the world. We are committed to making ASL more socioeconomically diverse by attracting talented students, regardless of their financial situation.

We are also committed to an outstanding educational program, which in turn requires additional space and excellent facilities. By building a Community Arts Building on the corner of Grove End Road and Waverley Place, we add top-flight

visual arts facilities as well as create the space we need in our current building for 21st century science classrooms, dramatically enhancing our art, science and technology programs. Digging below the Waverley playground to add an Aquatic & Fitness Center enables us to offer all five strands of physical education and, most importantly, will give us the flexibility in our schedule to make our students' academic experience the best it can be. These building projects unlock the potential of ASL, allowing for key intellectual development and growth.

We hope you will join us in this transformational moment for our School, which builds on the foresight and generosity of prior generations. As we envision the future—the *New Frontiers* our children will face—we thank you for your participation and support.

Lori E. Fields
Chair of the Board of Trustees

Dwight M. Poler
Campaign Chair

Coreen R. Hester
Head of School



New Frontiers: Growing Our Endowment

Our Promise

Continued and enhanced
financial stability and flexibility

A more diverse student body

Our Future

A strong ASL endowment,
benefitting students today and
tomorrow

Increased endowment for
student financial assistance
supporting a diverse and
inclusive community

ASL began to build endowment in 2005 and continues to work toward the National Association of Independent Schools (NAIS) recommendation that a school have a total endowment that amounts to 2–3 times its operating budget. We are not there yet.

A strong endowment will make ASL's financial planning less dependent on tuition.

ASL has 5 categories of endowment. This campaign focuses on the importance and growth of financial aid endowment to support socioeconomic diversity.

A critical component of educational excellence, diversity:
improves student learning

fosters understanding of our
dynamic world

attracts the best students, faculty,
and staff

prepares students for life beyond ASL.

**This campaign will provide a
secure financial future and an
environment for our students that
includes people with different
life experiences and views.**



New Frontiers: 21st Century Science

Our Promise

World-class STEM (Science, Technology, Engineering and Mathematics) education in which students are engaged in authentic learning and problem solving

Our Future

21st century science labs for our Middle and High schools

Additional middle school classrooms to ease overcrowding

In order to best equip students with the 21st century skills needed to tackle a wide range of scientific, health and technological challenges, we need state-of-the-art, flexible spaces that allow students to dive deeply into relevant and engaging scientific problems. We want our students to “do” science rather than just to “learn” science.

Space currently used for art and science will be redesigned to accommodate all MS and HS science needs.

This campaign will provide our students with the facilities and resources for the highest quality science learning experience.



New Frontiers: Exemplary Visual Arts

Our Promise

A comprehensive visual arts program that encourages creativity, divergent thinking and problem solving

Our Future

A new, purpose-built Community Arts Building

Increased space for students' growing interest in the visual arts

Community space for exhibitions and events

The four-story building will include eight middle and high school art studios with natural light and flexible space, an exhibition and meeting area, and a covered outdoor space to serve the entire community.

The new space will accommodate growing student demand in the Middle and High schools for the visual arts, including drawing and painting, sculpture, ceramics and photography.

This campaign will provide our students with the facilities and resources for unprecedented opportunities in creative exploration and imaginative design.



New Frontiers: Aquatic & Fitness Center, unlocking our potential

Our Promise

An academic schedule that promotes what is best in student learning

A comprehensive physical education program that encourages fitness and the mastery of physical skills that instill confidence both in and out of the classroom

Our Future

A 14,000 sq. ft. Aquatic & Fitness Center, including a 25-meter, six-lane pool and flexible gym space

This additional space allows for improved academic scheduling and increased collaborative time for our teachers

Our current physical education facilities cannot accommodate the more than 1,100 students who take PE every other day. The result is that PE now drives our academic schedule.

A pool and a new multi-purpose space provide much needed K-12 PE teaching facilities, which unlock our schedule and ease the constraints of our contained, urban campus.

Swimming is a fundamental and important addition to our K-12 PE program. Currently, we offer only four of the five strands of PE deemed essential by international curriculum standards. We lack aquatics.

This campaign will provide a new facility that both enhances our PE program and allows for a daily schedule that promotes what is best for student learning and teacher collaboration.

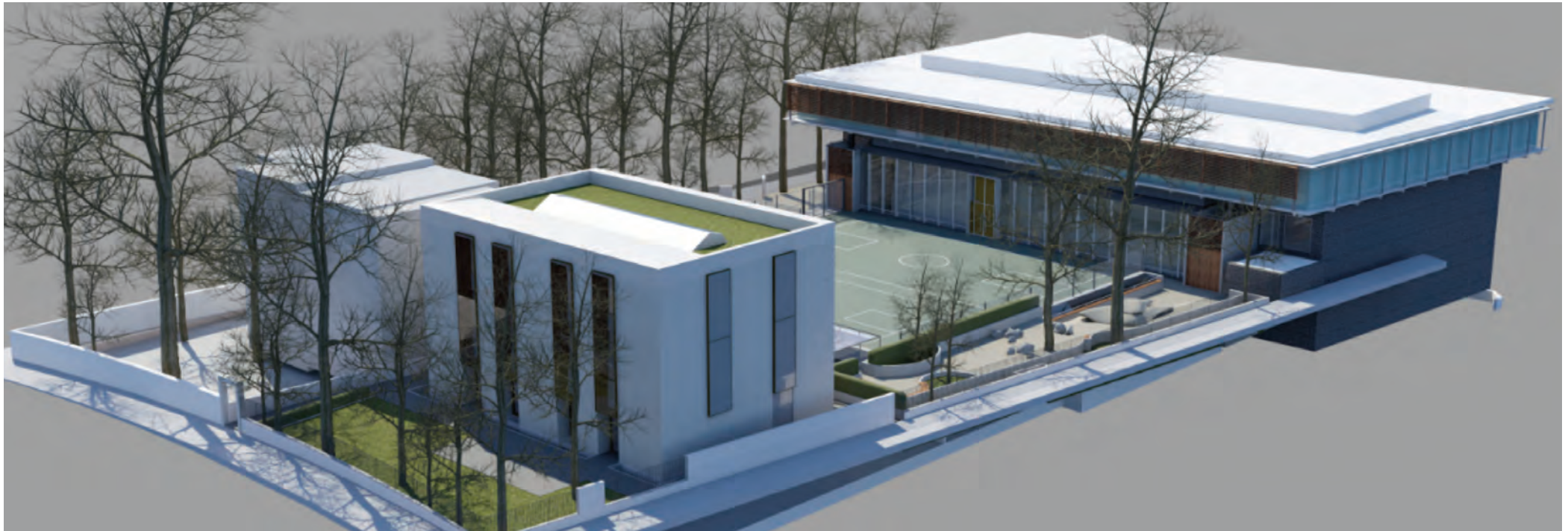


Now it's our turn

Today at ASL we enjoy some extraordinary facilities, such as the Waverley Place campus, the Canons Park playing fields, the High School, and the School Center for Education and the Arts. Generous parents who came before us provided these excellent spaces because they had a vision for our School and set forth to implement it. Previous campaigns expanded our facilities and helped to grow our endowment so that ASL would continue to attract and retain the finest faculty and staff and provide an outstanding American education with a global perspective. We have been fortunate beneficiaries.

Now it's our turn. It's time to fulfill *Our Promise* and safeguard *Our Future*. This campaign for ASL is taking us to *New Frontiers* in education and will leave an extraordinary legacy for our students. We hope you'll join us in this transformational moment.

New Frontiers: Our Promise. Our Future.



Our mission is to develop the intellect and character of each student by providing an outstanding American education with a global perspective.

Our Vision for Excellence

Learning

The heart of our school lies in the dynamic relationship between student and teacher. ASL provides a rigorous program that engages students through inquiry and collaboration. Our dedicated faculty encourages students to think critically, to take risks and to be creative. We challenge students to strive for personal and academic excellence, and we treasure the intellectual, social, artistic and physical development of each student. ASL students are expected to participate actively in their learning and to engage fully in the intellectual life of the School.

Character

We believe that students develop integrity and strength of character by learning to make good choices and by taking responsibility for their actions. We expect ASL students to be kind, honest and respectful of others. We value a strong work ethic, and we seek to instill in our students a sense of optimism and determination in the face of challenge. Our supportive environment encourages students to develop the courage to act independently and the confidence to pursue leadership opportunities.

Community

Respect for individual and cultural differences is a central value of ASL. We celebrate the open exchange of ideas and spirit of inclusiveness that flow from our multicultural community. The active involvement of students, families, alumni, faculty and staff creates the energy and enthusiasm that characterize the ASL experience. Our community participates wholeheartedly in the extensive opportunities found in London, and we are committed to pursuing learning experiences throughout the world.

Service

We believe that service to others teaches young people to be productive and effective citizens, and we challenge ASL students to find passion and purpose beyond themselves. ASL offers meaningful opportunities in the classroom and through service learning for students to participate actively in our school, local neighborhoods, and abroad. We seek to inspire the compassion and international awareness necessary for students to contribute responsibly to the global community.

NEW FRONTIERS
Our Promise. Our Future.

Growing Our Endowment Enhancing Our Program

21st Century Science

Exemplary Visual Arts

Aquatic & Fitness Center, Unlocking Our Potential

**The
American
School in
London**